

## Beekeeping with Biosa

There has been a lot of buzz about the plight of Honey Bees and Colony Collapse Disorder (CCD) in recent years - and rightly so, as up to 1/3 of human food production depends on them.



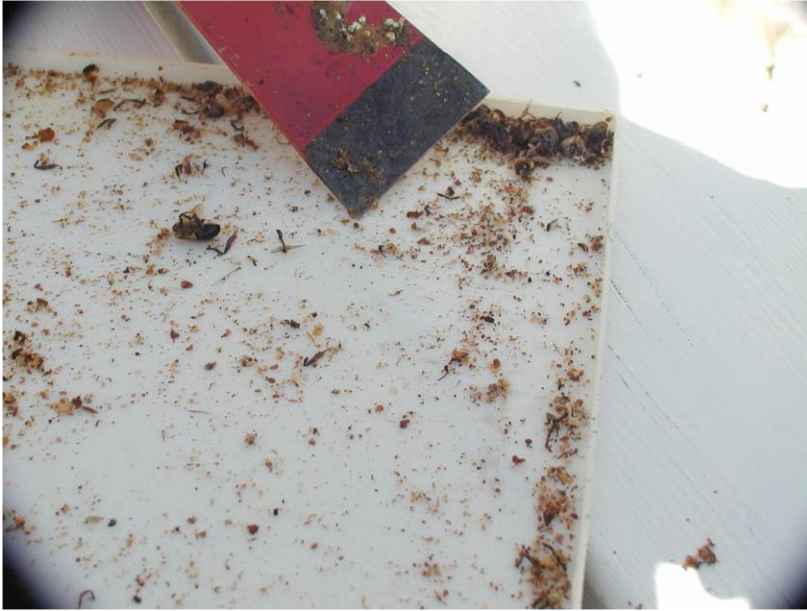
1 - Honeycomb from a healthy hive



2 - Top view of hive

**So what is killing the bees?** The most recent studies suggest that there is not one single answer; rather the problem is an overwhelming stress on the bees caused by a number of factors including: pesticides, pathogens, malnutrition, mites, and fungus.

**What is the solution?** Well, we believe (and beekeepers agree) that it's Vita Biosa - an organic fermented probiotic solution of herbs and natural sugars - that can safely and effectively address each of the causes of bee stress.



3 - Bottom board shows an accumulation of dead Varroa Mites

For best results, a comprehensive plan that includes the use of Vita Bios throughout the bee's local area, including hives, pollination area, and water supply is recommended.

The following is considered best practice for a beekeeping operation.

#### **Around the Hive:**

- Use Biosa instead of smoke when working in the hive. A 50% solution of Vita Bios (50% water) is misted over the combs and bees with an atomizer. The solution is applied like smoke. Only push 5 times at a time.
- In spring, treat all supers and combs by misting with a 50% solution.
- In summer, clean the entrance pegs regularly with a 10% solution of Vita Bios (90% water). It is best to soak the pegs for 24 hours in Vita Bios. Afterwards, they are dried in a warm oven. It is of course necessary to have several extra pegs available.
- During the honey season, regularly spray a 10% solution of Vita Bios onto the landing boards. This serves as a kind of 'foot bath' and the bees carry the medium into the hive.



4 - Inspecting hive using VB instead of smoke



5 - Natural water source for bees



#### Pollination Area:

- From spring until blossoming, all vegetation to be pollinated is sprayed weekly with Biosa. Total application rate is 70 litres per hectare or about 9 gal per acre per year.

#### Water Source:

- Vita Biosa is added to the bees' water supply, throughout the season, at a rate of 2-5 ml per litre or 0.1.- 0.2oz weekly.
- Ponds and swamps used by bees are treated with 1 litre or 34oz of Vita Biosa per cubic meter (1,000 litres or 265gal) of water, applied when the water temperature first warms in the spring.

Please note - Vita Biosa is neither a pesticide nor an insecticide.